

RONNY KRIPPNER

# HAVING FUN WITH HYMNS

*The Prospective Organ Scholar Course, Oxford 2011*

## 1. HYMN INTRODUCTIONS

*Example: NEH 265 REGENT SQUARE*

- Try to use the first and last period of a hymn
- Soloing-out of melody on a separate manual (trio style):

NEH 265 REGENT SQUARE



- Figurate the Melody by using **passing notes** where possible:

NEH 265 REGENT SQUARE



### A BRIEF LESSON IN MELODIC FIGURATION

1. Scale (descending)      1.a      1.b

2. Scale (ascending)      2.a      2.b

3. Passing Notes      3.a      3.b      3.c

4. Decorated Melodies      4.a      4.b

The exercises are presented in four rows, each with a title and three examples. The first row shows a descending scale (1.a, 1.b) and a decorated melody (1.c). The second row shows an ascending scale (2.a, 2.b) and a decorated melody (2.c). The third row shows passing notes (3.a, 3.b, 3.c). The fourth row shows decorated melodies (4.a, 4.b). The exercises are written in treble clef with a key signature of one flat (B-flat).

## RONNY KRIPPNER

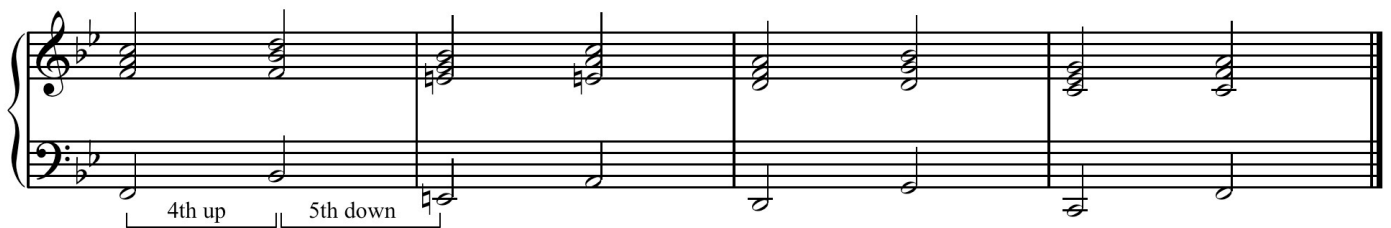
- Fully decorated melody:

NEH 265 REGENT SQUARE



## 2. HYMN EXTENSIONS

What works very well here is a Cycle of Fifths based on the motivic material of the hymn:



## STRUCTURE:

1. Quick Modulation to Dominant (F Major)
2. Motivic Cycle of Fifths
3. Modulation back to Tonic (B flat Major)
4. Recapitulation of beginning of hymn on Dominant Pedal – Cadence.

### 3. VARIATIONS

*Example: NEH 408 BLAENWERN*

#### 3.1 Bicinium 1: upper part figured



#### 3.2 Bicinium 2: motific bass



#### 3.3 Trio: figured melody in soprano



#### 3.4 Meditation: Ritornello on Strings – Solo on Clarinet in left hand



3.5. **Fugato:** two-part counterpoint, imitation in octaves



4. FESTIVE HYMN PRELUDES AND POSTLUDES

*Example: NEH 376 KINGSFOLD*

4.1 **Model 1:** Melody one octave higher, free phrase endings



4.2. **Model 2:** Free Fantasia, based on harmonisation



4.3. **Model 3 - Hymn Concerto:** Ritornello plus Hymn Melody on a solo manual

4.4 **Model 4 – Hymn Toccata:** Toccata pattern in manuals, tune in the pedals

